

Project

«Ukraine Local Economic Development»

Pavlograd Community Profile



*(Materials for drafting the Strategic Plan of
City Economic Development for 2005)*

Content

INTRODUCTION.....	4
Background	4
Brief Historical Overview	4
POPULATION.....	5
HOUSING.....	8
EMPLOYMENT AND INCOME.....	9
Employment	9
Wages	10
Unemployment.....	11
ECONOMY.....	13
Economic Entities	13
Biggest Employers	15
City Economy.....	16
PUBLIC FACILITIES AND INFRASTRUCTURE	17
ENVIRONMENT.....	18
Atmosphere	18
Waste Management.....	19
TRAVEL	19
CITY DEVELOPMENT GOALS.....	20

Tables	
Table 1. Comparison of City and District.....	4
Table 2. Functional Size of Cities.....	5
Table 3. City and Raion Residents (1989 through 2005, as of Dec 31 st).....	5
Table 4. Population Statistics.....	6
Table 5. Major Age Groups.....	6
Table 6. Education Levels of the Population over 10 (According to the 2001 Census).....	7
Table 7. Housing Development.....	8
Table 8. New Houses Completed.....	8
Table 9. Total Employment Trends (Number of Jobs; Employed + Self-employed).....	9
Table 10. Employment Branch-by-Branch.....	10
Table 11. Average Wages (UAH).....	10
Table 12. Wages Branch-by-Branch.....	10
Table 13. Official Unemployment Rate as of December 31 st (as Percentage of Labor Force).....	11
Table 14. Number of Applicants per Vacancy as of December 31 st (Number of Registered Unemployed Individuals Divided by Number of Vacant Jobs).....	11
Table 15. The Registered Unemployed by Educational Level.....	11
Table 16. The Registered Unemployed by Duration of Unemployment (as of Dec 31 st).....	11
Table 17. Age Structure of the Registered Unemployed.....	12
Table 18. Comparative Table of the Registered Unemployed Structure: City, Raion, Oblast, and Ukraine as a Whole.....	12
Table 19. Registered Economic Entities per 1,000 Residents (as of December 31 st).....	13
A. Legal Entities.....	13
B. Individuals.....	13
Table 20. Businesses Registered in the City.....	13
Table 21. Economic Entities Registered in the City.....	13
Table 22. Production Output by Industries (Adjusted Prices; UAH ,000).....	13
Table 23. Local Enterprises by Number of Employees.....	14
Table 24. Export Structure (\$,000).....	14
Table 25. Export Structure by Countries (\$,000).....	15
Table 26. Structure of Direct Foreign Investments by County of Origin (\$,000).....	15
Table 27. Major Employers.....	15
Table 28. Municipal Budget Revenues per Resident.....	16
A. 2003 p.	16
Table 29. Free Sites in the City Available for Economic Activities.....	17
Table 30. Number of Individuals Graduated from Secondary and Higher Education Institutions.....	17
Table 31. Hospital capacity.....	17
Table 32. Energy Consumption.....	18
Table 33. Records of Traffic Control (if any), 1999 and 2004.....	18
Table 34. Public Transit.....	18
Table 35. Air Pollution.....	18
Table 36. Annual Waste Production and Management Cost.....	19
Table 37. Number of Visitors.....	19
Table 38. Hotels Capacities.....	19
Table 39. Capacity of Sport and Cultural Facilities.....	19
Table 40. Planned City Investment Activities until 2008.....	20

INTRODUCTION

Background

City population: 113,000 people

Year of foundation: 1784

City day: September 18th

Level of administrative subordination: Pavlohrad is subordinated to oblast

Area: 59,300 km²

City history:

Brief Historical Overview

A sponce was built in the triangle formed by the rivers of Gnizdka, Vovcha, and Kocherha not far from Luhanska settlement back in 1779. The sponce together with the rivers of Gnizdka, Vovcha, and Samara formed a compound (h(g)rad in Russian/Ukrainian), which was named PadloHrad.

In the year of 1784, Pavlohrad obtained the status of city and became the center of Katerynoslav vice regency. Zaporizhzhya Cossacks from Samara and Kalmius palankas along with the retired military were first residents of Pavlohrad.

The education network was growing rapidly: there were twelve education institutions in Pavlohrad in 1897.

The Early Theater was constructed in 1896. Later it became "the People's Audience".

World War I, October (1917) revolution, and civil war caused extensive damage to the city and its residents. Early 1920s saw beginning of city redevelopment. A railroad was constructed in 1924.

An artillery range was developed in 1931. World War II ruined three quarters of the city. The Germans occupied Pavlohrad on October 11, 1941.

New residential areas were developed in the post-war period. Coalmines construction began in 1950s. Explored coal reserves suggested Pavlohrad to be the center of the Western Donbas. Altogether, eleven coal mines and concentrating mill were constructed.

Post-war decades saw formation of the local machine-building industry. A number of plants were built, such as Khimmash, Lytmash, Selmash; construction facilities, such as Pavlohradzalibeton, Budbaza, walling materials plant, portable structures plant, Pavlogradzhytlobud trust.

There are a garment factory operated successfully, food product plant, two bread-baking plants, furniture factory, and a leather factory which later turned into a footwear factory.



Table 1. Comparison of City and District

	Area (km ²)	Area share	Number of inhabitants	Inhabitants share	Population density
City	59.3	0.010%	113000	0.240%	1905.56
Rayon	1453	0.241%	31200	0.066%	21.47
Oblast	31900	5.284%	3472900	7.373%	108.87
Ukraine as a whole	603700	100,000%	47100500	100,000%	78,02

	City	Raion	Region	Ukraine	Competing City 1	Competing City 2	Competing City 3
Area (km ²)	59.3	1453	31900	603700	40	30	50
Permanent population	113.7	31.2	3472900	47100500	70.9	51.5	131.8
Employed population	45083	10737	0	0	23.5	17.9	48.2
Registered unemployed individuals	2143	1033	71400	993900			
Labor force:	47226	11770	71400	993900	23.5	17.9	48.2

Competing city 1:	Novomoskovsk
Competing city 2:	Zhovty Vody
Competing city 3:	Nikopol

Table 2. Functional Size of Cities

	Function		
	Residential	Labor	Service
Pavlograd	0.240%	x	0.116%
Novomoskovsk	0.000%	x	0.000%
Zhovty Vody	0.000%	x	0.000%
Nikopol	0.000%	x	0.000%

Note: Residential function represents the share of permanent residents; labor function expresses share of occupied jobs; service function is a share of occupied jobs excluding agriculture, forestry, industry, building, transport and communications – everything compared to country

POPULATION

Table 3. City and Raion Residents (1989 through 2005, as of Dec 31st)

	1989	1995	2000	2001	2002	2003	2004	2005
City	131400	135600	124600	119700	116900	115400	113000	
Raion	50500	32800	33600	33100	32600	32100	31200	

City and Raion Residents (1989 through 2005)

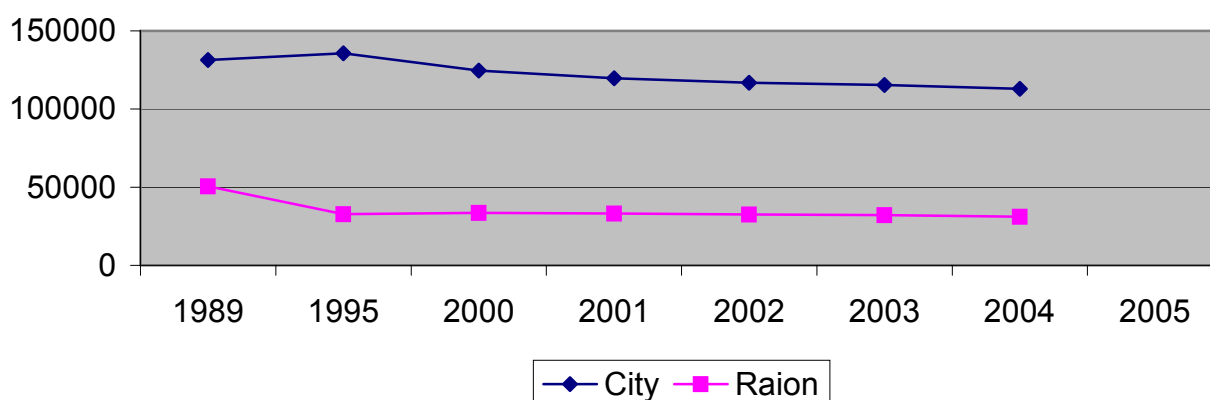


Table 4. Population Statistics

	1989	1995	2000	2002	2003	2004
Newborn	3067	1244	955	1010	1082	1129
Deceased	1460	1626	1686	1650	1665	1755
Natural exchange	1607	-382	-731	-640	-583	-626
Moved in	7434	2590	1625	1608	1538	1204
Moved out	6120	3851	2922	2636	2535	1711
Migration balance	1314	-1261	-1297	-1028	-997	-507
Total increase/decrease	2921	-1643	-2028	-1668	-1580	-1133
Chain index – number of population	102.27%	98.80%	98.40%	98.59%	98.65%	99.01%

Note: The “chain index” is the total population as percent of that in preceding year (like in a chain: each link is connected to preceding one).

Migration and Natural Exchange

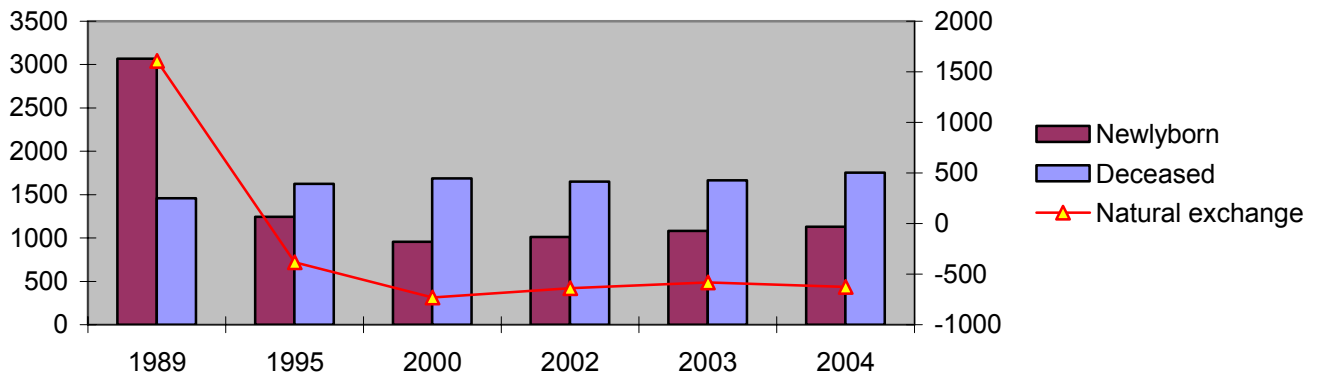


Table 5. Major Age Groups

	1989	%	2000	%	2004	%
Male 0 –14 yrs.	17024	12.96 %	11416	9.16%	9074	8.03%
Female 0 –14 yrs.	16121	12.27 %	10830	8.69%	8697	7.70%
Male + female 0-149	33145	25.22 %	22246	17.85 %	17771	15.73 %
Male 15-24 yrs.	8165	6.21%	9274	7.44%	10203	9.03%
Female 15-24 yrs.	8262	6.29%	8825	7.08%	8243	7.29%
Male + female 15-24	16427	12.50 %	18099	14.53 %	18446	16.32 %
Male 25-44	21427	16.31 %	18967	15.22 %	16501	14.60 %
Female 25-44	22834	17.38 %	19994	16.05 %	18478	16.35 %
Male + female 25-44	44261	33.68 %	38961	31.27 %	34979	30.95 %
Male 45-60	11624	8.85%	11373	9.13%	10526	9.32%
Female 45-60	13079	9.95%	14087	11.31 %	13282	11.75 %

Male + female 45-60	24703	18.80 %	25460	20.43 %	23808	21.07 %
Male over 60	5245	3.99%	7322	5.88%	7948	7.03%
Female over 60	10247	7.80%	12246	9.83%	13393	11.85 %
Male + female over 60	15492	11.79 %	19568	15.70 %	21341	18.89 %
„Age Index“	0.47		0.88		1.20	

Note:

$$\text{Age index} = \frac{\text{Number o population aged 60 years or more}}{\text{Number o population aged up to 14 years inclusive}}$$

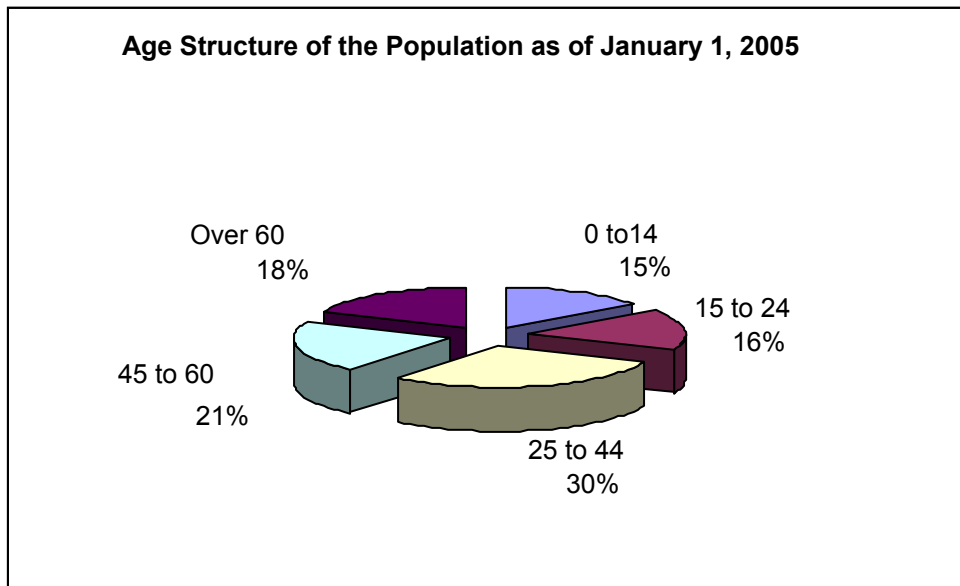
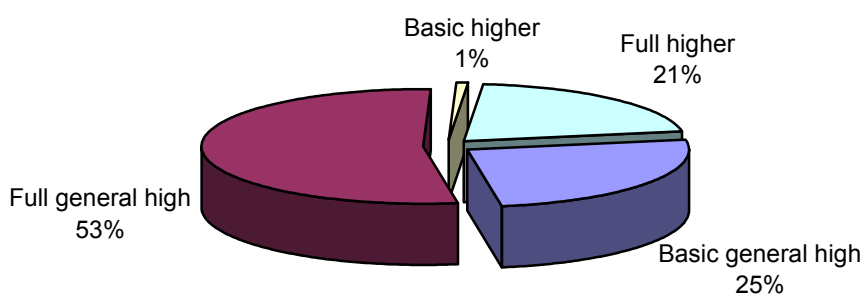


Table 6. Education Levels of the Population over 10 (According to the 2001 Census)

	Absolute	Relative	Relative, UA
Basic general high	16786	25.36%	25.0%
Full general high	35041	52.93%	34.8%
Vocational	x	0.00%	x
Basic higher	621	0.94%	21.3%
Full higher	13752	20.77%	16.6%

Note: The numbers in the "Full general high" row include all individuals with the given educational level regardless at what educational institution they obtain it i.e. at high school or vocational school.



HOUSING

Table 7. Housing Development

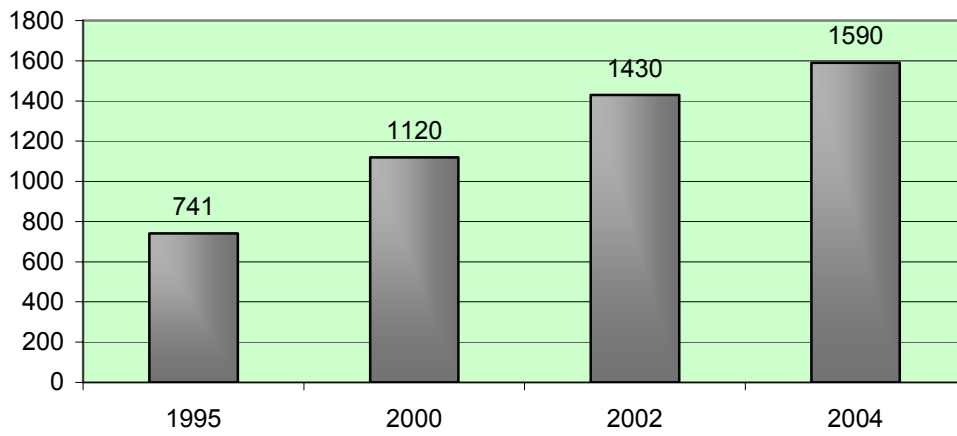
	1995	2000	2002	2004
Permanently inhabited houses – total	591	815	820	707
- in family houses	11227	11364	11425	11495
- % in family houses	1899.66%	1394.36%	1393.29%	1625.88%
Permanently inhabited apartments - total	13476	35201	35421	35053
- in family houses				
- % in family houses	0	0	0	0
% of apartments connected to public water line	75.00%	76.40%	77.20%	84.00%
% of apartments connected to gas	90.00%	82.70%	83.40%	96.00%
% of apartments connected to public sewerage	73.00%	76.40%	77.20%	84.00%
% of apartments connected to central heating	72.00%	81.80%	82.90%	84.00%
Apartments per 100 inhabitants				
Apartments per 100 inhabitants in UA	52.1	56.8	58.4	0.0

In the given context housing means either apartment or family house.

Table 8. New Houses Completed

	1995	2000	2002	2004
Newly built houses - total	86	116	108	142
- in family houses	79	116	107	142
- % in family houses	91.86%	100.00%	99.07%	100.00%
Newly built apartments – total	491	116	185	142
- in family houses	79	116	107	142
- % in family houses	16.09%	100.00%	57.84%	100.00%
Average market price UAH per m ² of new apartment	741	1120	1430	1590
Average size of a new apartment (m ²)	75	95	78	89

Average Market Price for 1 m² of Floor Area in a New Housing Unit



EMPOLOYMENT AND INCOME

Employment

Table 9. Total Employment Trends (Number of Jobs; Employed + Self-employed)

	1995	2000	2001	2002	2003	2004
City	44770	40399	38686	36431	35463	34758
Raion	14700	7008	5753	5748	5157	4005
Oblast	x	1660500	1683700	1720800	1722400	0
Ukraine as a whole	23811900	21336700	21112400	21502500	21587500	0

Table 10. Employment Branch-by-Branch

	2004	
	Number of Employers	Percentage of All Employees
Agriculture, hunting, forestry, and fishery	255	0.77%
Industry	18908	57.26%
Construction	937	2.84%
Wholesale, retail, and vehicle sale and repair	1082	3.28%
Hotels and restaurants	85	0.26%
Transport and communications	2562	7.76%
Financial activities	567	1.72%
Real estate operations, leasing, provision of services to legal entities	1130	3.42%
Public administration	912	2.76%
Education	3191	9.66%
Health care and social protection	2968	8.99%
Other collective, public and personal services	422	1.28%

Wages**Table 11. Average Wages (UAH)**

	2000	2001	2002	2003	2004	2001/ 2000	2002/ 2001	2003/ 2002	2004/ 2003
	Nominal Wages (UAH)					% Growth			
City	279.20	381.00	439.48	510.73	663.45	36.46%	15.35%	16.21%	29.90%
Raion	135.80	180.10	185.20	215.07	285.55	32.62%	2.83%	16.13%	32.77%
Oblast	273.00	370.00	437.60	526.08	666.58	35.53%	18.27%	20.22%	26.71%
Ukraine as a whole	230.00	311.00	376.38	462.27	589.62	35.22%	21.02%	22.82%	27.55%

Table 12. Wages Branch-by-Branch

	2000	2001	2002	2003	2004	2001/ 2000	2002/ 2001	2003/ 2002	2004/ 2003
	Nominal Wages (UAH)					% Growth			
Agriculture, hunting, forestry, and fishery	135.40	201.50	254.49	278.39	416.93	48.82%	26.30%	9.39%	49.76%
Industry	346.60	482.20	517.84	600.17	784.82	39.12%	7.39%	15.90%	30.77%
Construction	336.00	452.40	449.51	413.06	462.23	34.64%	-0.64%	-8.11%	11.90%
Wholesale, retail, and vehicle sale and repair	152.00	196.80	284.39	313.65	453.39	29.47%	44.51%	10.29%	44.55%
Hotels and restaurants	119.40	150.00	222.77	278.35	286.57	25.63%	48.51%	24.95%	2.95%
Transport and communications	225.70	386.80	474.02	545.67	712.44	71.38%	22.55%	15.12%	30.56%
Financial activities	439.70	620.40	759.70	784.34	897.37	41.10%	22.45%	3.24%	14.41%
Real estate operations, leasing, provision of services to legal entities	198.20	261.80	326.74	376.55	466.70	32.09%	24.81%	15.24%	23.94%

Public administration	306.60	394.30	466.71	544.84	843.99	28.60%	18.36%	16.74%	54.91%
Education	144.20	209.20	243.12	315.41	387.67	45.08%	16.21%	29.73%	22.91%

Unemployment

Table 13. Official Unemployment Rate as of December 31st (as Percentage of Labor Force)

	1995	2000	2001	2002	2003	2004
City	0.13%	5.90%	4.09%	4.11%	3.60%	4.54%
Raion		3.70%	3.59%	5.04%	6.27%	8.78%
Oblast	0.0%	11.6%	8.7%	8.3%	7.4%	0.0%
Ukraine as a whole	0.0%	11.7%	11.1%	10.1%	9.1%	0.0%

Table 14. Number of Applicants per Vacancy as of December 31st (Number of Registered Unemployed Individuals Divided by Number of Vacant Jobs)

	2000	2001	2002	2003	2004
City	18	18	7	5	4
Raion	47	19	28	24	28
Oblast	17	10	8	7	0
Ukraine as a whole	17	11	9	7	0

Table 15. The Registered Unemployed by Educational Level

	1995		2000		2001		2002		2003		2004	
	Abs.	%	Abs.	%	Abs.	%	Abs.	%	Abs.	%	Abs.	%
Basic general high			129	2.90%	125	4.00%	167	5.40%	152	5.60%	123	5.74%
Full general high			598	13.30%	437	14.00%	578	18.60%	548	20.10%	695	32.43%
Vocational	7	6.30%	1953	43.50%	1276	41.00%	1255	40.30%	1006	36.90%	566	26.41%
Basic higher			1314	29.30%	914	29.40%	803	25.80%	705	25.90%	584	27.25%
Full higher			480	10.70%	354	11.40%	297	9.50%	289	10.60%	244	11.39%

Table 16. The Registered Unemployed by Duration of Unemployment (as of Dec 31st)

	2000		2001		2002		2003		2004	
	Abs.	%	Abs.	%	Abs.	%	Abs.	%	Abs.	%
<1 month	274	6.67%	307	9.98%	360	11.64%	336	12.36%	232	10.83%
1 to 3 months	264	6.43%	253	8.22%	340	10.99%	195	7.17%	250	11.67%
4 to 6 months	295	7.18%	340	11.05%	301	9.73%	271	9.97%	236	11.01%
7 to 9 months	713	17.36%	733	23.82%	732	23.67%	694	25.53%	547	25.52%

10 to 12 months	647	15.76%	579	18.82%	511	16.52%	521	19.17%	393	18.34%
13 to 18 months	587	14.30%	357	11.60%	460	14.87%	415	15.27%	326	15.21%
19 to 24 months	824	20.07%	319	10.37%	304	9.83%	229	8.43%	197	9.19%
25 to 36 months	334	8.13%	131	4.26%	82	2.65%	56	2.06%	41	1.91%
>36 months	168	4.09%	58	1.88%	3	0.10%	1	0.04%	1	0.05%

Table 17. Age Structure of the Registered Unemployed

	1995		2000		2001		2002		2003		2004	
		%		%		%		%		%		%
15 to 17 years	1	0.90%	6	0.13%	13	0.42%	6	0.19%	3	0.11%	6	0.28%
18 to 27 years	45	40.54%	104	23.38%	776	24.94%	888	28.54%	745	27.35%	595	27.76%
28 to the retirement age		0.00%	183	4.08%	179	5.75%	181	5.82%	182	6.68%	173	8.07%
Other	65	58.56%	324	72.40%	2144	68.89%	2036	65.45%	1794	65.86%	1451	67.71%

Table 18. Comparative Table of the Registered Unemployed Structure: City, Raion, Oblast, and Ukraine as a Whole

		2000	2001	2002	2003	2004
Registered with the Unemployment Service for over 6 months	City	79.71%	70.75%	67.64%	70.49%	70.23%
	Raion	56.50%	44.70%	40.10%	46.90%	48.50%
	Oblast					
	Ukraine					
18 to 27 year old	City	23.38%	24.94%	28.54%	27.35%	27.76%
	Raion	26.70%	22.00%	21.40%	20.50%	18.50%
	Oblast					
	Ukraine					
28 to the retirement age	City	4.08%	5.75%	5.82%	6.68%	8.07%
	Raion	73.30%	77.80%	78.50%	79.50%	81.50%
	Oblast					
	Ukraine					
Individuals with higher education	City	40.00%	40.80%	35.30%	36.50%	38.64%
	Raion	31.40%	26.10%	22.60%	19.30%	18.10%
	Oblast					
	Ukraine					
Female	City	70.10%	72.70%	71.50%	72.40%	75.90%
	Raion	68.00%	66.60%	68.40%	63.70%	62.10%
	Oblast					
	Ukraine					
Disabled individuals	City			0.20%	0.30%	0.09%
	Raion		0.20%	0.10%		0.09%
	Oblast					
	Ukraine					

ECONOMY

Economic Entities

Table 19. Registered Economic Entities per 1,000 Residents (as of December 31st)

A. Legal Entities

	1996	1998	2000	2002	2004
City		19.4	21.5	21.7	17.26
Raion			1.25	0.74	0.2

B. Individuals

	1996	1998	2000	2002	2004
City			38.7	37.6	36.6
Raion			1.5	2.1	2.1

Table 20. Businesses Registered in the City

	1996	1998	2000	2002	2004
Total		5713	6846	6741	8169
Percentage of individual entrepreneurs		64.00%	64.30%	63.40%	68.70%
Number of registered businesses – chain index			119.83%	98.47%	121.18%

Table 21. Economic Entities Registered in the City

	2004	Including:	
		Private Ones	SMEs
Agriculture, hunting, and forestry	49	24	26
Fishery	3		
Industry, including:	376	160	169
minerals/mining	12	2	3
manufacturing	191	158	164
production and distribution of power, gas and water	8	0	2
Construction	239	160	161
Wholesale, retail, and vehicle sale and repair	4837	898	900
Hotels and restaurants	49	0	30
Transport and communications	203	53	54
Financial activities	32	0	11
Real estate operations, leasing, provision of services to legal entities	245	78	83
Education	16	2	3
Health care and social assistance	87	12	13
Collective, public and personal services	236	38	40
Domestic services			
TOTAL	6372	1425	1490

Note: SME stands for Small and Medium Enterprises

Table 22. Production Output by Industries (Adjusted Prices; UAH ,000)

	1996	2000	2004
Agriculture, hunting, and forestry		216.6	
Fishery		6040.3	

Industry, including:		8.4	
minerals/mining		6031.9	
manufacturing		0	
production and distribution of power, gas and water		6173	
Construction		8602.1	
Wholesale, retail, and vehicle sale and repair		1267.7	
Hotels and restaurants		2897.7	
Transport and communications		1943.1	
Financial activities		6808.1	
Real estate operations, leasing, provision of services to legal entities		378	
Education		111.5	
Health care and social assistance		302.3	
Collective, public and personal services		0	
TOTAL	0	34740.4	

Table 23. Local Enterprises by Number of Employees

	2000		2002		2004	
	Abs.	%	Abs.	%	Abs.	%
0 (the self-employed)		0.00%		0.00%		0.00%
1 to 20 employees	2223	91.07%	2237	90.60%	1752	89.34%
21 to 100 employees	139	5.69%	151	6.12%	136	6.94%
101 to 500 employees	59	2.42%	62	2.51%	47	2.40%
501 to 1,000 employees	12	0.49%	10	0.41%	15	0.76%
1,001 to 5,000 employees	8	0.33%	9	0.36%	10	0.51%
Over 5,000 employees		0.00%		0.00%	1	0.05%

Table 24. Export Structure (\$,000)

	1996	2000	2004
Livestock and livestock products			5713.36
Crop products			805.37
Animal or vegetable fat and oil			
Ready-to-eat products			35.08
Mineral products			11826.69
Products of chemical and related industries			4021.9
Polymeric materials, plastics, and rubber			124.03
Raw leather and fur and products of these			
Timber and wood			2.38
Pulp of wood of other fibrous cellulose materials			
Textiles and textile products			
Footwear, headwear, umbrellas			
Products of stone, gypsum, cement, ceramics, and glass			
Non-precious metals and products of these			6708.18
Mechanical equipment; machines and mechanisms, electric equipment and parts of these; audio/video recording/playback devices			882.03
Vehicles and road equipment			
Optical, photographic, and cinematographic devices and appliances; medical/surgical devices; clocks/watches; musical instruments			2.22
Miscellaneous manufactured goods			
Works of art			

Goods bought in ports			
Miscellaneous			
TOTAL	0	0	30121.24

Table 25. Export Structure by Countries (\$,000)

	2004
CIS	652.46
Russia separately	5704.74
EU	17050.64
US and Canada	12.24
Middle East and Turkey	2019.53
Other	4681.63
TOTAL	30121.24

Export Structure by Countries (2004, %)

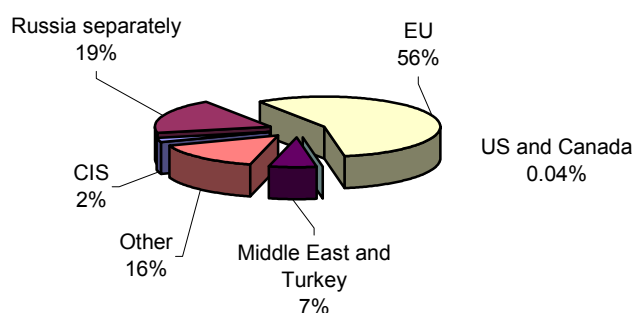


Table 26. Structure of Direct Foreign Investments by County of Origin (\$,000)

	2004	Total since 1990	%
Russia	15.28		0.79%
Germany			0.00%
France	1924.12		99.21%
USA			0.00%
Great Britain			0.00%
Italy			0.00%
Poland			0.00%
Japan			0.00%
Cyprus			0.00%
Other			0.00%
TOTAL	1939.4	0	100.00%

Biggest Employers

Table 27. Major Employers

Company	Core Activity	Number of Employees (2004)
Pavlogradvugillya, a public joint stock company	Coal production	12989

Pavlogradkhimmash, a public joint stock company	Production of plastic heat exchangers	724
Zavod Palmash, a public joint stock company	Production of casting equipment	391
Zavod Pavlogradspetsmash, a limited liability company	Production of scaffolds	141
Vestatozavod, a public joint stock company	Production and repair of lather tools	490
Geomechanica, a limited liability company	Production of construction and metal structures	65
Pavlograd chemical plant	Design, development, manufacture, utilization, and processing of energy consuming materials and products	1574
Pavlograd mechanical plant	air- and spacecraft building	1572
Sofrakhim, a joint venture a limited liability company	Paints and liqueur production	76
Pavlogradkhliv, a limited liability company	Bakery	300
Ukrsyrpom, a limited liability company	Rennet cheese production	99
Molochny Dim, a limited liability company	Milk and cheese processing	853
Pavlogradkonopleprom, a public joint stock company	Hemp growing and processing	58
Municipal print shop	Printing of Newspapers	50
Zavod Buddetal, a public joint stock company	Processing	77
Prydniprovsky Kulelyvarny (Bullet Makers) Zavod, a limited liability company	Production of half-finished products	152
Pavlogradzhylstroy, a public joint stock company	Production of construction materials of Budmaister brand	344
Meblevy Kombinat, a limited liability company	Furniture	23
Pavlogradska Shveina Fabryka, a limited liability company	Ready-made garments	71
Pavlogradbud, a limited liability company	Industrial, housing, and road construction	144
Pavlograd Bakery	Accepting and drying cereals	86
УЖКХ, a communal utility service enterprise	Maintaining the housing stock	598
Pavlogradteploenergo, a communal utility service enterprise	Heat production and distribution	437
Vodokanal, a communal utility service enterprise	Centralized water and wastewater services	516

City Economy

Table 28. Municipal Budget Revenues per Resident

A. Year 2003

	Individual Income Tax	Enterprise Profit Tax (for communally-owned enterprises)	Local Taxes and Fees	Land Payment (Tax)	Total Tax Revenues	Rental Income
City	212.31	1.34	10.97	27.09	274.87	x

Raion	x	x	x	x	x.	x
Oblast	353.73	x	11.74	91.95	508.30	x
Ukraine as whole	285.01	x	12.49	42.84	1 145.00	x

Table 29. Free Sites in the City Available for Economic Activities

Address, brief description, purpose	Proprietor (share)	Area
Sites within the City Boundaries		
"Nagorny" residential area. Housing and socio-cultural purposes	Pavlograd City Council	40.6 hectares
"Mashynobudivnykiv residential area. Housing and socio-cultural purposes	Pavlograd City Council	13, 5 hectares
"September 18 th " residential area. Housing and socio-cultural purposes	Pavlograd City Council	3 hectares
A western part along Lenin Street. Residential areas # 47, 48, 49, 59. Housing and socio-cultural purposes	Pavlograd City Council	15 hectares
Area adjacent to the Gnizdka river. Housing and socio-cultural purposes	Pavlograd City Council	7.5 hectares

PUBLIC FACILITIES AND INFRASTRUCTURE

Statistics on Educational Institutions

Table 30. Number of Individuals Graduated from Secondary and Higher Education Institutions

School – type, name (secondary schools altogether)	1996	1998	2000	2002	2004
High schools	2202	2368	2952	1481	1506
Higher educational institutions					
I, II accreditiaion levels	371	169	228	179	144
III, IV accreditation levels					36

Table 31. Hospital capacity

Health Facility	Number of Beds
Central hospital # 4	290
City hospital # 1	200
Maternity hospital	100
Tuberculosis dispensary	130
Narcological dispensary	20
Clinic # 7	125
Clinic 15	125

Table 32. Energy Consumption

	1998	2000	2002	2004
Electricity (MWh)	x	417001.8	433179.5	504628.1
- Residential	x	111091.7	62198.4	61155.5
- Commercial	x	305910.1	370981.1	443472.6
Rated capacity	x	x	x	x
Gas (1,000 m ³)	192494	91847	120634.4	105064.4
Rated capacity	x	x	x	x
Drinking water (1,000 m ³)	18650	13554	18191	14176
Rated capacity	x	x	x	x
Heating (GCal)	901.9	567.8	681.3	576.5
- Residential	320.6	265.8	212.4	151.2
- Commercial	502.1	448.7	399.4	338.8
Rated capacity	x	x	x	x

Table 33. Records of Traffic Control (if any), 1999 and 2004

Point of Accounting (Crossroad, Bridge, Street etc.)	Vehicles, Total			Heavy Vehicles and Trailers		
	1990	2004	% Change	1990	2004	% Change
			x			x
			x			x
			x			x
			x			x

Table 34. Public Transport

	1996	1998	2000	2002	2004
Passengers	7420.6	10937	10503.9	10950.9	12215.5
Total length of routes/lines (km)	91	91	124.5	124.5	157.5
Number of routes/lines	12	12	15	15	18
Turnover (mil pas per km)	41555.4	60687.2	58822	61325	68406.8

ENVIRONMENT

Atmosphere

Table 35. Air Pollution

Month/Quarter / Year	1992			1996			2000			2004		
	CO ₂	NO _x	Dust	CO ₂	NO _x	Dust	CO ₂	NO _x	Dust	CO ₂	NO _x	Dust
Maximum limit	0.186	0.487	1.468	0.133	0.125	0.753	1.265	0.282	0.762	2650.659	670.889	1292.535

Waste Management

Table 36. Annual Waste Production and Management Cost

Wastes	Amount (t)	Cost (UAH ,000)
Household garbage	1037.9	27221
Compostable waste	103	
Street rubbish		
Other plastics		
Glass		
Other non-compostable waste	126.654	2.546
Bricks		
Electro technical waste	751.757	2.9824
Marketplace trash		
Paint resin gum	0.76	0.547
Waste water (1,000 m3)	1103.67	3298.018
Rain water (1,000 m3)		

TRAVEL

Table 37. Number of Visitors

	Number of Visits					
	1997	2000	2001	2002	2003	2004
Raion						
Oblast	0	0	53777	76379	89052	0
Ukraine as a whole	1539000	1729000	1904000	1963000	2513000	0
Novomoskovsk						
Zhovty Vody						
Nikopol						
Raion						

Table 38. Hotels Capacities

Hotel	Capacity (persons)	Occupancy Rate (%)
Khimik Hotel	72	50
Kolos Hotel	38	80
Zaman Hotel	8	50
Prybrezhny Hotel	27	80

Table 39. Capacity of Sport and Cultural Facilities

Facility	Capacity (persons)	Events which are Most Attractive for Spectators
City Sport and Recreation Complex Center	Up to 1,000	City box, judo, power lifting, free calisthenics, sport dance championships. Basketball and volleyball tournaments. Ukraine basketball championship.
Shkurenko Sport and Recreation Complex	500	City Thai box championship. Oblast soccer tournaments. City gymnastics championship.
Girnyak stadium	5,000	Soccer tournaments.

Shakhtar stadium	10,000	Soccer tournaments. Public and occupational holidays. Sport and public events.
Shkiryan Rukavychka, a children's sport school	Up to 100	City championships, oblast boxing and kickboxing tournaments.
Yunist sport club	Up to 1,000	City volleyball and basketball tournaments and championships. Oblast mini-soccer, judo, calisthenics, weightlifting, and soccer tournaments.
Municipal children's sport (gymnastics) school	100	City gymnastics tournaments and championships (women). Oblast and city volleyball tournaments.

CITY DEVELOPMENT GOALS

Table 40. Planned City Investment Activities until 2008

Project	Budget (UAH mln.)	Source of Funding
Protection of the city from flooding in Hnizdka river vicinity (1st construction phase)	5.5	Budgets of all levels
Reconstruction of the pressure sewer between the suburban Wastewater Pumping Station to the Pavlohrad municipal wastewater treatment facilities	14.4	Budgets of all levels
Reconstruction of city wastewater treatment facilities	9	Budgets of all levels
Reconstruction of Wastewater Pumping Station # 3 and city gravity sewer	1.2	Budgets of all levels
Potable water production enterprise	12	Investors
Solid rocket propellant disposal	749	State budget
Ammunition disposal	28	State budget